

Specifications of DocuCentre-IV C7780 / C6680 / C5580 Series

Copy Function

	DocuCentre-IV C7780	DocuCentre-IV C6680	DocuCentre-IV C5580
Type	Console type		
Memory	2 GB		
HDD	160 GB (Usable Space: 67 GB)		
Colour Capability	Full Colour		
Scanning Resolution	600 x 600 dpi		
Warm-up Time	90 sec or less (at room temperature 20°C)		
Original Paper Size	Max: 297 x 432 mm (A3, 11 x 17") for both sheet and book originals		
Output Paper Size	Max: SRA3 (320 x 450 mm), 13 x 18" 330.2 x 457.2 mm For Bypass Tray: 13 x 19.2" 330.2 x 488 mm Min: A5 For Bypass Tray: Postcard (100 x 148 mm) and envelope (120 x 235 mm)		
Output Paper Weight ¹	Tray: 64 - 220 gsm, Bypass Tray: 64 - 300 gsm		
First Copy Output Time	BW: 4.1 sec or less (A4/LEF in Black & White preference mode) Colour: 6.5 sec or less (A4/LEF in Colour preference mode)		
Continuous Copy Speed (In Simplex and Duplex)	75 ppm <BW> 70 ppm <Colour>	65 ppm <BW> 60 ppm <Colour>	55 ppm <BW> 50 ppm <Colour>
Paper Tray Capacity	Standard: 3,260 sheets Tray 1 & 2: 500 sheets, Tray 3: 870 sheets, Tray 4: 1,140 sheets, Bypass Tray: 250 sheets Optional: High Capacity Feeder: 2,000 sheets Maximum: 5,260 sheets (when optional A4 High Capacity Feeder (HCF2) or Oversized High Capacity Feeder (HCF B1-S) is equipped)		
Output Tray Capacity	500 sheets (Simple Catch Tray)		
Power Supply	AC220-240V±10%, 10A (Single power source), 50/60Hz AC110±10%, 11A+9A (Dual power source), 50/60Hz		
Power Consumption	2.4kW or less (AC220-240) / 2.2kW or less (110V) Sleep Mode: 1.5W or less, Low Power Mode: 104W, Standby Mode: 192W		
Dimensions	W 700 x D 804 x H 1,154 mm		
Machine Weight	247 kg		

¹ Performance may vary for heavyweight, coated and special stocks.

Print Function

Type	Built-in type		
Continuous Print Speed (In Simplex and Duplex)	75 ppm <BW> 70 ppm <Colour>	65 ppm <BW> 60 ppm <Colour>	55 ppm <BW> 50 ppm <Colour>
Print Resolution	2,400 x 2,400 dpi		
PDL	Standard: PCL6, PCL5, Optional: Adobe® PostScript® 3TM		
Operating System	Standard: Windows® 2000, Windows® XP, Windows Server® 2003, Windows Server® 2008-R6, Windows Vista®, Windows® 7, Windows® XP Professional+64, Windows Server® 2003+64, Windows Server® 2008+64, Windows Vista® +64, Windows® 7 +64, Windows Server® 2008 R2 +64, Mac OS 10.5-10.6 Optional: Windows® 2000, Windows® XP, Windows Server® 2003, Windows Server® 2008+86, Windows Vista®, Windows® 7, Windows® XP Professional +64, Windows Server® 2003+64, Windows Server® 2008+64, Windows Vista®+64, Windows® 7+64, Windows Server® 2008 R2+64, Mac OS 9.2.2, Mac OS x 10.3.9-10.4.11 (except 10.4.7), Mac OS X 10.5-10.6		
Connectivity	Standard: Ethernet 100BASE-TX/10BASE-T, USB2.0 Optional: 1000BASE-T ²		

² When this option is equipped, Ethernet 100BASE-TX/10BASE-T will not be available.

Scan Function

Type	Colour Scanner		
Scanning Speed	BW: 100 ppm, Colour: 100 ppm One-Pass Duplex Scanning: 200 ipm		
Scanning Resolution	600 x 600 dpi, 400 x 400 dpi, 300 x 300 dpi, 200 x 200 dpi		
Connectivity	Ethernet 100BASE-TX/10BASE-T/1000BASE-T(Option)		
Scan Destinations	Scan to Folder, Scan to PC/Server (using FTP/SMB protocol), Scan to Email, Scan to Home, Scan to USB		

Fax Function (Optional)

Send Document Size	Max: A3, 11 x 17", Long documents (Max: 600 mm)
Transmission Time	Less than 3 seconds
Transmission Mode	ITU-T G3
No. of Fax Lines	PBX, PSTN, Maximum 3 ports G3-3 port

Duplex Automatic Document Feeder

Capacity	250 sheets
Original Paper Size	Max: A3, 11 x 17", Min: A5
Output Paper Weight	38 - 200 gsm (Duplex: 50 - 200gsm)
Feeding Speed	BW: 80 DPM, Colour: 75 DPM (A4 LEF Simplex)

Descriptions in this material, product specifications and / or appearances are subject to change without prior notice due to improvements. Please note that the product colour appears differently from the actual colour as a result of properties of papers or printing ink. Windows and Windows NT are registered trademarks of Microsoft Corporation. NetWare is a registered trademark of Novell, Inc. in the United States. Macintosh, Mac OS and Ether Talk are trademarks of Apple Computer, Inc. PostScript is a registered trademark of Adobe Systems Incorporated in each country. HP-GL is a registered trademark of Hewlett-Packard Company. Other company names or product names are registered trademarks or trademarks of each company.

Spares for the standard configuration of installed machines is supported for up to 7 years from the date of the end of machine production.

For more information or detailed product specifications, call or visit us at

FUJI XEROX ASIA PACIFIC PTE LTD Malaysia Operations (993478A)

HQ: 10, Jalan Bersatu 13/4, 46200 Petaling Jaya, Selangor. Tel: 03-7882 2888 Toll-Free: 1-300-88-5880

BRANCHES Penang: 19-G-2, B Tower, Bayan Point, Medan Kampung Relau, 11900 Pulau Pinang. Tel: 04-643 5000 Fax: 04-644 4677 **Johor Bahru:** No. 21 & 23, Jalan Setia Tropika 1/28, Taman Setia Tropika, 81200 Kempas, Johor Bahru. Tel: 07-238 7868 Fax: 07-238 2678, 07-238 2178 **Melaka:** 43 & 45, Jalan Melaka Raya 13, Taman Melaka Raya, 75000 Melaka. Tel: 06-281 0466 Fax: 06-281 0408 **Kota Kinabalu:** Lot No. P1/G/42/Grd, 1st, 2nd, 3rd & 5th Floor, KK Time Square, 88100 Kota Kinabalu, Sabah. Tel: 088-486 888 Fax: 088-486 668 **Kuching:** 199A-201, Lot 3049 & 3050, Eastmoore Centre, 2 ½ Mile Jalan Rock, 93200 Kuching, Sarawak. Tel: 082-240 633, 082-254 633 Fax: 082-418 733

<http://www.fujixerox.com.my>

XEROX®, and the sphere of connectivity design are trademarks or registered trademarks of Xerox Corporation. In the U.S. and/or other countries. DocuCentre is a trademark or registered trademark of Fuji Xerox Co., Ltd. Other trademarks are the property of their respective owners.

April 2011

Finisher C2 with Booklet Maker (Optional)

	DocuCentre-IV C7780	DocuCentre-IV C6680	DocuCentre-IV C5580
Paper Size / Paper Weight	Output Tray: Max 13 x 19", 12.6 x 19.2" (320 x 488mm), Min: Postcard (100 x 148mm), 64 to 300 gsm Finisher Tray: Max: 13 x 19", 12.6 x 19.2" (320 x 488 mm), Min: B5 LEF, 64 to 220 gsm Booklet Tray: Max: 13 x 18", Min: A4, Letter (8.5 x 11"), 64 to 220 gsm		
Stacker Capacity	Output Tray: 500 sheets (A4) Finisher Tray: No Stapling: A4: 1,500 sheets, B4 or larger: 1,500 sheets, Mixed Stack: 300 sheets Stapling: A4: 200 copies or 1,500 sheets B4 or larger: 100 copies or 1,500 sheets Booklet Tray: 20 copies		
Staple			
Capacity	50 sheets (Max 90 gsm)		
Paper Size	Max: A3, 11 x 17", Min: B5 LEF		
Position	1 position (Front, Rear / Corner), 2 positions (Parallel)		
Punch			
Paper Size	A3, 11 x 17", B4, A4, A4 LEF, Letter (8.5 x 11"), Letter (8.5 x 11") LEF, B5 LEF		
Number of Holes	2 / 4 holes (Option US 2 / 3 holes)		
Paper Weight	64 to 200 gsm		
Booklet Finishing			
Capacity	Booklet: 15 sheets, Bi-Fold: 5 sheets		
Paper Size	Max: 13 x 18", Min: A4, Letter (8.5 x 11")		
Paper Weight	Booklet: 64 - 220 gsm, Bi-Fold: 64 - 220 gsm		
Dimensions/Weight	W 921 x D 650 x H 1,010 mm, 86 kg		

¹ Finisher C2 without Booklet Maker is also available with stacker capacity up to 3,000 A4 sheets.

Finisher D2P with Booklet Maker (Optional)

Paper Size / Paper Weight	Output Tray: Max 13 x 19", 12.6 x 19.2" (320 x 488 mm), Min: Postcard (100 x 148 mm), 64 to 300 gsm Finisher Tray: Max: 13 x 19", 12.6 x 19.2" (320 x 488 mm), Min: B5 LEF, 64 to 300 gsm Booklet Tray: Max 13 x 18", Min A4, Letter (8.5 x 11"), 64 to 300 gsm		
Stacker Capacity	Output Tray: 500 sheets (A4) Finisher Tray: No Stapling: A4: 2,000 sheets, B4 or Larger: 1,500 sheets Mixed Stack: 300 sheets Stapling: A4: 200 sets or 2,000 sheets, B4 or Larger: 100 sets or 1,500 sheets Booklet Tray: 20 sets		
Staple			
Capacity	100 sheets (64 - 300 gsm)		
Paper Size	Max: A3, 11 x 17" Min: B5 LEF		
Position	Single (Front/Corner, Center/Parallel, Back/Parallel, Corner), Dual (Parallel)		
Punch			
Paper Size	A3, 11 x 17", B4, A4, A4 LEF, Letter (8.5 x 11"), Letter (8.5 x 11") LEF, B5 LEF		
Number of Holes	2 / 4 holes (Option US 2 / 3 holes)		
Paper Weight	64 to 220 gsm		
Booklet Finishing			
Capacity	Booklet: 20 sheets, Bi-Fold: 5 sheets		
Paper Size	Max: 13 x 18", Min: A4, Letter (8.5 x 11")		
Paper Weight	Booklet: 64 - 300 gsm, Bi-Fold: 64 - 300 gsm		
Folding¹			
Z-Fold	Paper size: A3, 11 x 17", B4, Paper Weight: 64 - 90 gsm		
Tri-Fold	Paper size: A4, Letter (8.5 x 11"), Paper Weight: 64 - 90 gsm		
Interposer			
Capacity	200 sheets		
Paper Size	Max: A3, 11 x 17" Min: B5 LEF		
Paper Weight	64 - 220 gsm		
Dimensions / Weight	W 1,050 x D 725 x H 1,165mm, 135 kg With D2 Folder Unit: W 1,250 x D 725 x H 1,165mm, 175 kg		

¹ D2 Folder Unit (Optional) is required.

A4 High Capacity Feeder (HCF2) (Optional)

Paper Size / Paper Weight	A4 LEF, Letter (8.5 x 11") LEF, B5 LEF, 64 - 220 gsm		
Capacity	2,000 sheets		
Dimensions / Weight	W 389 x D 610 x H 377 mm, 29 kg		

Oversized High Capacity Feeder (HCF B1-S) (Optional)

Paper Size / Paper Weight	Postcard (100 x 148 mm), B5, B5 LEF, 8 x 10" LEF, Letter (8.5 x 11") LEF, Letter (8.5 x 11") LEF, A4, A4 LEF, 8.5 x 13", Legal (8.5 x 14"), B4, A3, 11 x 17", 12 x 18", 12.6 x 17.7", 12.6 x 19.2", 13 x 18", 13 x 19", 64 to 300 gsm		
Capacity	2,000 sheets		
Dimensions / Weight	W 988 x D 762 x H 992 mm, 160 kg		



Reproduction Prohibitions Please note that reproduction of the following is prohibited by law: Domestic and overseas bank notes and coins, government-issued securities, national bonds and local bond certificates. Unused postage stamps and post cards. Certificate stamps stipulated by law. The reproduction of works for copyright purposes (literary works, musical works, paintings, engravings, maps, cinematographic works, photographic works, etc.) is prohibited except when they are reproduced personally, at home or within limited range according to the above. This product is equipped with an anti-counterfeit feature. This feature is not intended to prevent illegal reproduction. Be extremely careful about the management of equipment used.



For Your Safe Use

Before using the product, read the Instruction Manual carefully for proper use.
Use the product with an appropriate adequate power source and voltage displayed. Be sure to establish a ground.
In the case of a failure or short circuit, an electric shock may result.



DocuCentre-IV

C7780

C6680

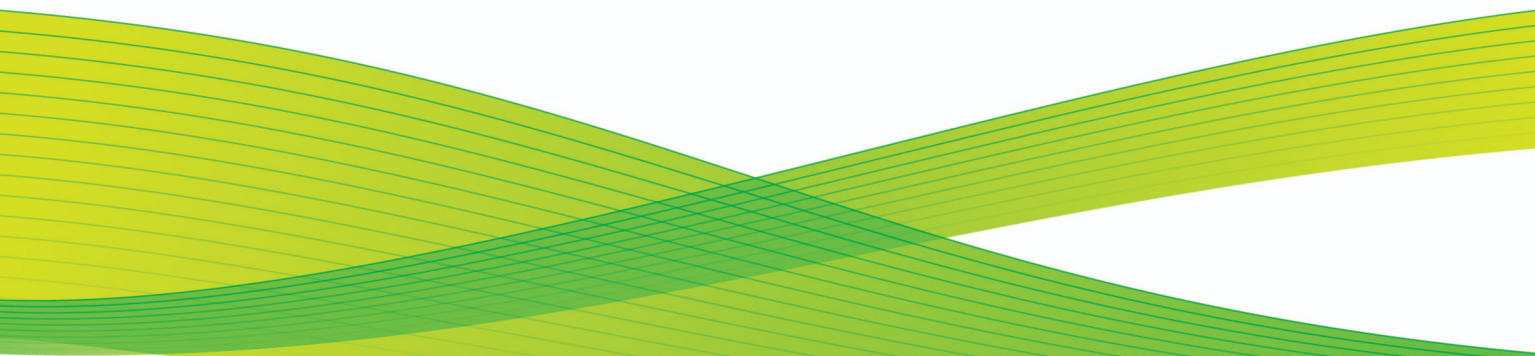
C5580



DocuCentre-IV C7780 / C6680 / C5580

Digital Colour Multifunction Device

Productivity, scalability and professional image quality



Productivity - simpler, smarter

When work gets done more simply, people get more productive.

The DocuCentre-IV C7780 / C6680 / C5580 series are built to enable your most demanding applications by delivering the production capabilities you need. They are scalable and can be customised for your business demands.

Performance to increase productivity

- Up to 75 ppm copy and print speeds. Enhance office productivity with full colour at a speedy 70 ppm!
- Fast scanning up to 100 ppm (duplex scanning: 200 ipm). Your department can swiftly scan, retrieve, electronically store and distribute documents.
- Exceptional media flexibility. Supporting a wider range of media types and weight from more trays than most devices in its class. It supports up to 300 gsm and media sizes up to SRA3.
- Multiple users can simultaneously perform different tasks at the device – scan, copy, print, transmit faxes and manage the queue – a helpful feature in maximising business efficiency.
- A wide range of finishing options are available. Short production runs can be efficiently handled in-house, saving time and money.



Convenient, walk-up operation

The colour user interface features bright, intuitive icons and easy access to all major functions directly from the home screen.

For easy document viewing, colour thumbnails and up-close previews can be shown on the device touch screen.

Take colour to a whole new level

The DocuCentre-IV C7780 / C6680 / C5580 series with advanced VCSEL technology, helps you create professional-looking documents at the touch of a button.

High-resolution output, highly impactful documents. With 2400 x 2400 dpi, photo-quality colour images and rich, crisp text, your output always makes a huge impact.

Always accurate image quality. The DocuCentre-IV C7780 / C6680 / C5580 series employ advanced print heads with Digital Image Registration Control Technology, which ensures consistently outstanding image registration.

Impressive results. Print brilliant, attention-grabbing images on a variety of stock as large as SRA3 and on paper weights up to 300 gsm, and take advantage of impressive finishing capabilities from saddle-stitch booklets to folded brochures.

Versatility from start to finish

Configuration Options



1

High Capacity Feeder
2,000 Sheets

2

Oversized High Capacity Feeder
2,000 Sheets

3

Base Unit with
8.5-inch Colour
User Interface

4

Simple / Offset
Catch Tray
(Optional)

5

Finisher C2 without
Booklet Maker –
Stacker, Stapler,
Hole Puncher
(Optional)

6

Finisher C2 with
Booklet Maker –
Stacker, Stapler, Hole
Puncher, Booklet Maker
(Optional)

7

Finisher D2P with Booklet
Maker – Stacker, Stapler,
Hole Puncher, Interposer,
Booklet Maker with Folder
(Optional)

Feeding options. Add on as your productivity and media handling needs increase.

The 2,000 sheet A4 High Capacity Feeder is perfect for long run reports, presentations or mailers.

The Oversized High Capacity Feeder supports up to 300 gsm stock and enables SRA3 full bleed applications.

Professional finishing options. Create professional presentations and attractive manuals or proposals. The range of optional finishers gives you efficient, print-on-demand versatility. These high performance finishers feature automatic stapling, hole-punching, folding and booklet making.

Flexible document handling. The 250-sheet capacity, single pass duplex document feeder allows both sides of a document to be scanned simultaneously at up to an incredible 200 images per minute for exceptional productivity.



Environmentally sound

The DocuCentre-IV C7780 / C6680 / C5580 series delivers cutting-edge reductions in energy consumption.

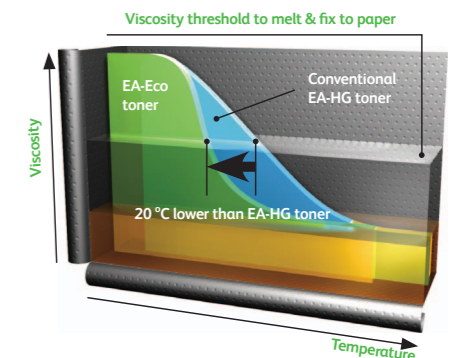
Low energy consumption. The DocuCentre-IV C7780 / C6680 / C5580 series consumes less power in standby, low power and operating modes, resulting in greater energy savings in the office.

Cutting-edge technology

Smart Energy Management Technology. Our innovative new Smart Energy Management Technology better manages energy usage by only using what is necessary, when it's necessary. With this new technology, these devices recover from sleep mode in just 2 seconds. It's all about using energy only when it's needed – but retaining convenience too.

Power LED Scanner. The LED technology used as the light source for image scanning consumes less energy and gives you ultra-quiet operation. Since the LED lamps light up immediately, the first copy out time has been reduced to less than 7 seconds.

EA-Eco Toner. This Emulsion Aggregation (EA) Ultra Low-Melt toner achieves a fusing temperature more than 20°C lower than conventional EA toner, reducing power consumption during fusion, as well as achieving a brilliant glossy output even on ordinary paper.



Features and functions for more applications

Work faster and more efficiently with powerful performance and convenience features that simplify document management

Get fast results. Experience high output performance with print speeds up to 70 ppm in colour and up to 75 ppm in black and white, with a first-page-out-time as fast as 4.1 seconds.

Maximise uptime. Generous, scalable paper handling options support media capacities up to 5,260 sheets in a wide variety of media sizes, types and weights.

Full range of scanning solutions. Simply scan your hard copy documents and get searchable digital files* that can be automatically shared via email or network folder, or stored on the device or any USB memory device for true portability.

*Optional Searchable PDF Kit is required

Reduce network traffic. Access scanned documents faster with advanced file compression techniques that dramatically shrink file sizes, reduce storage space requirements and cut down on document traffic on your network*.

*Optional High Compression Image kit is required

Walk-up simplicity. Print from and scan to any USB memory device for faster document delivery when you're not at your computer*.

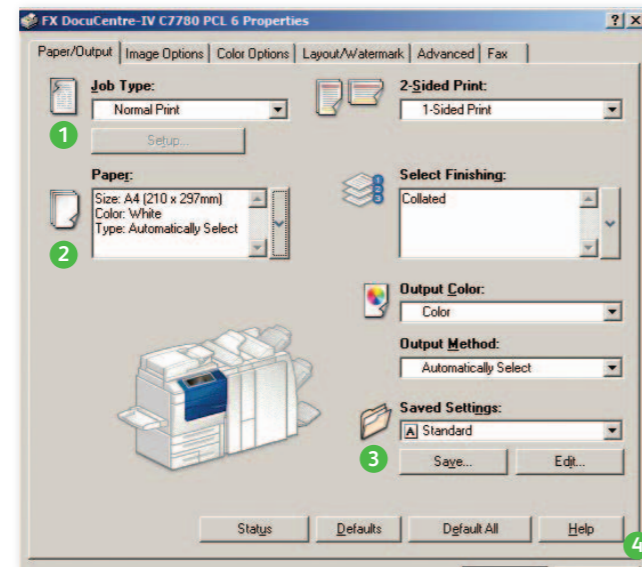


*Optional Scan to USB Kit and/or USB Media Print Kit is required

To speed up copying and faxing an express (simple) copy and fax feature is available that displays only the basic settings. This is provided in addition to the normal features.

Reduce costs by printing multiple pages per sheet (N-Up) which is especially useful when printing Microsoft PowerPoint presentations, MS Word documents, PDFs — and even web pages.

WHQL certified PCL and PostScript print drivers provide a consistent, easy-to-use interface for end-users that can greatly simplify your printing operations.



- 1 Drop down menu for secure print, fax, save to mailbox and more
- 2 Paper selection summary window
- 3 Favourite print settings
- 4 Help function for feature descriptions and driver assistance

Single print driver works with all printers. The Xerox Global Print Driver® supports Fuji Xerox and non-Xerox devices on the network. Never have to redeploy another print driver, saving hours of downtime.

Save time by storing the settings of frequently printed documents as favourites in your print driver. Settings include paper sizes, covers, duplexing, finishing and more.

Advanced, paperless faxing. Your users can send and receive faxes without leaving their desks. LAN fax sends faxes directly from applications on your desktop. Plus, fax-forwarding lets you forward incoming faxes to an email address, for retrieval and further distribution on demand.

Incoming faxes reported by e-mail. For a paperless fax option, fax jobs can be reported to five pre-registered users when the document is stored in the mailbox.

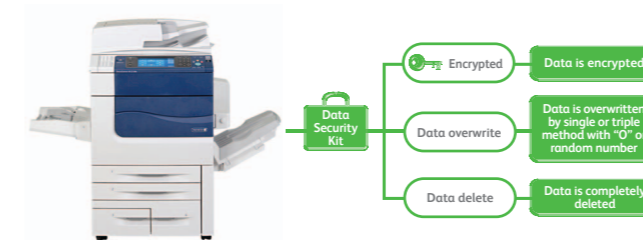
Maximum manageability and security

The DocuCentre-IV C7780 / C6680 / C5580 multifunction devices incorporate some of the strongest security features in the industry, ensuring that your document production workflow, often overlooked in security checks, is well-protected.

Secure print helps keep documents private by holding print jobs in the queue until the user enters the password.

Password protected PDFs require a password to open and view a sensitive scan.

Data Security Kit provides the following security features:



Network Authentication restricts access to device features and management settings by validating user names and passwords.

IEEE 802.1X protocol helps ensure devices connected to the network are properly authenticated.



IPv6 support opens up additional IP addressing opportunities across the Internet and inside enterprise firewalls. IPv6 provides additional network security, better network routing and configuration, and improved support for high volume printing and larger print jobs.

Proactively manage printing fleets

Control colour usage and costs with Fuji Xerox management tools.

CentreWare™ Internet Services software makes it easy for administrators to configure the device, upload address books, monitor usage and consumables remotely and establish auditing capabilities.



Manage colour printing to minimise costs. Control costs by nominating when colour could be used and by whom. This ensures that colour is available to those individuals who truly leverage its power - such as the sales teams and marketing department.

Driverless printing for remote users with CentreWare Internet Services web utility. Any connected computer can immediately output PDF and TIFF files from any network computer, without using a print driver at all.

Device Setup Tool allows for simplified device configuration and administration, and lets you easily clone configurations to other similar devices on the network.